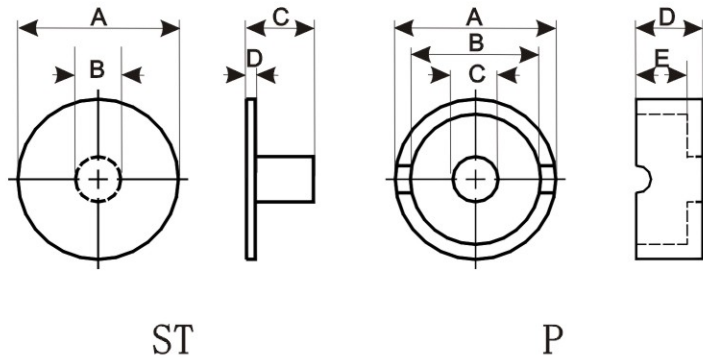


## [STP TYPE]

## 面實裝 POWER CHOKE CORES

U.S. Type



### FEATURES 特長

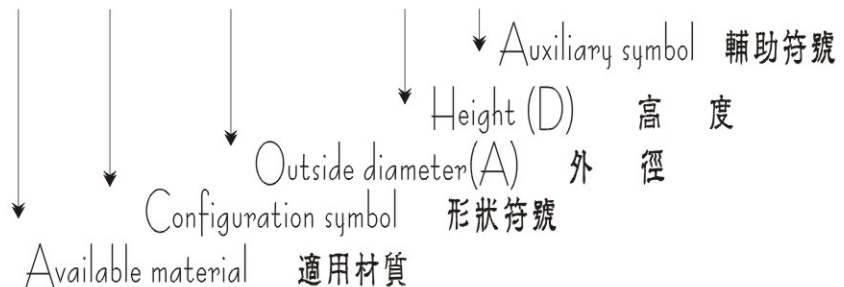
自然降溫，用于相當大的電流下，甚至于150%的定額電流，溫升小于15攝氏度。

Natural heat sinking, used at relatively large current, even at 150% of rated current, and the temperature rise is less than 15°C .

### PRODUCT IDENTIFICATION

### 產品識別碼

T2 STP 4.0 × 2.2 T



### USEAGE 用途

插板式裝配之DC/DC轉換器  
小型電源供應器  
倍壓回路  
高L值電感器

Board mounted DC/DC converters;  
Miniature power supplies;  
Voltage multiplying circuits;  
High L inductors.

### DIMENSION 尺寸

UNIT:m/m  
CORE DIMENSION

| Core Order Code | A                                       | B        | C                                    | D                                    | E                                      |            |
|-----------------|---|----------|--------------------------------------|--------------------------------------|--|------------|
| STP 4.0X2.2T    | ST 3.9± <sup>0.1</sup> / <sub>0.2</sub> | 1.20±0.1 | 2.2± <sup>0.1</sup> / <sub>0.2</sub> | 0.5±0.15                             |  | ST 3.9X2.2 |
|                 | P 4.0± <sup>0</sup> / <sub>0.3</sub>    | 3.0±0.15 | 1.4±0.1                              | 1.6± <sup>0.2</sup> / <sub>0.1</sub> | 1.2±0.15                               | P 4.0X1.6  |
| STP 8.5X4.0T    | ST 8.38±0.15                            | 2.4±0.1  | 3.8±0.2                              | 0.8±0.15                             |  | ST 8.5X3.8 |
|                 | P 8.5±0.15                              | 7.1±0.15 | 2.7±0.15                             | 3.2±0.2                              | 2.4± <sup>0.10</sup> / <sub>0.15</sub> | P 8.5X3.2  |

## [STP TYPE]

## 面實裝 POWER CHOKE CORES

### STANDARD SPECIFICATIONS OF STP POWER CHOKE CORES

#### 面實裝基座型, 電感值, 直流抵抗, 定格電流規格表

Tolerance of Inductance:  
電感值公差

STP 4.0×2.0 T:  
1.0~1000μH±20%

STP 8.5×4.0 T:  
1.0~1000μH±20%

| Inductance<br>電感<br>L (μH) | DCR(Ω)Max. 直流抵抗 |                 | Rated D.C. Current(A) 定格電流 |                 |
|----------------------------|-----------------|-----------------|----------------------------|-----------------|
|                            | STP<br>4.0×2.0T | STP<br>8.5×4.0T | STP<br>4.0×2.0T            | STP<br>8.5×4.0T |
| 1.0                        | 0.025           | 0.045           | 5.0                        | 2.0             |
| 1.5                        | 0.030           | 0.050           | 5.0                        | 1.9             |
| 2.2                        | 0.035           | 0.060           | 5.0                        | 1.5             |
| 3.3                        | 0.040           | 0.070           | 5.0                        | 1.2             |
| 4.7                        | 0.045           | 0.080           | 3.0                        | 1.2             |
| 6.8                        | 0.050           | 0.085           | 2.5                        | 1.0             |
| 10                         | 0.055           | 0.095           | 2.0                        | 0.7             |
| 15                         | 0.060           | 0.135           | 1.8                        | 0.6             |
| 22                         | 0.084           | 0.160           | 1.5                        | 0.5             |
| 33                         | 0.090           | 0.275           | 1.3                        | 0.45            |
| 47                         | 0.11            | 0.550           | 1.0                        | 0.34            |
| 68                         | 0.15            | 0.575           | 0.90                       | 0.29            |
| 100                        | 0.29            | 1.100           | 0.80                       | 0.24            |
| 150                        | 0.36            | 1.400           | 0.60                       | 0.20            |
| 220                        | 0.39            | 2.250           | 0.50                       | 0.17            |
| 330                        | 0.73            | 2.900           | 0.40                       | 0.16            |
| 470                        | 0.88            | 3.600           | 0.35                       | 0.14            |
| 680                        | 1.15            | 4.550           | 0.30                       | 0.12            |
| 1000                       | 1.45            | 8.100           | 0.25                       | 0.08            |
|                            |                 |                 |                            |                 |
|                            |                 |                 |                            |                 |
|                            |                 |                 |                            |                 |
|                            |                 |                 |                            |                 |

- ▶ This indicates the value of current when the inductance is 10% lower than its initial value at D.C. Superposition or the value of D.C. Current when temperature rise  $\Delta t = 40^{\circ}\text{C}$  whichever is lower.
- ▶ For any STP core requirement not listed in the catalog, please feel free to contact with us for more information.

## [STP TYPE] 面實裝 POWER CHOKE CORES

### INDUCTANCE VS. CURRENT CURVE

Inductance Range: (1.0  $\mu$ H~1000 $\mu$ H)

TYPICAL ELECTRICAL CHARACTERISTICS CURVE:

STP 4.0X2.0 ~ STP 8.5X4.0

TEST INSTRUMENT ZENTECH 101 & 301A

INDUCTANCE VS. CURRENT (REFERENCE)

電感值 - 電流(參考值)

